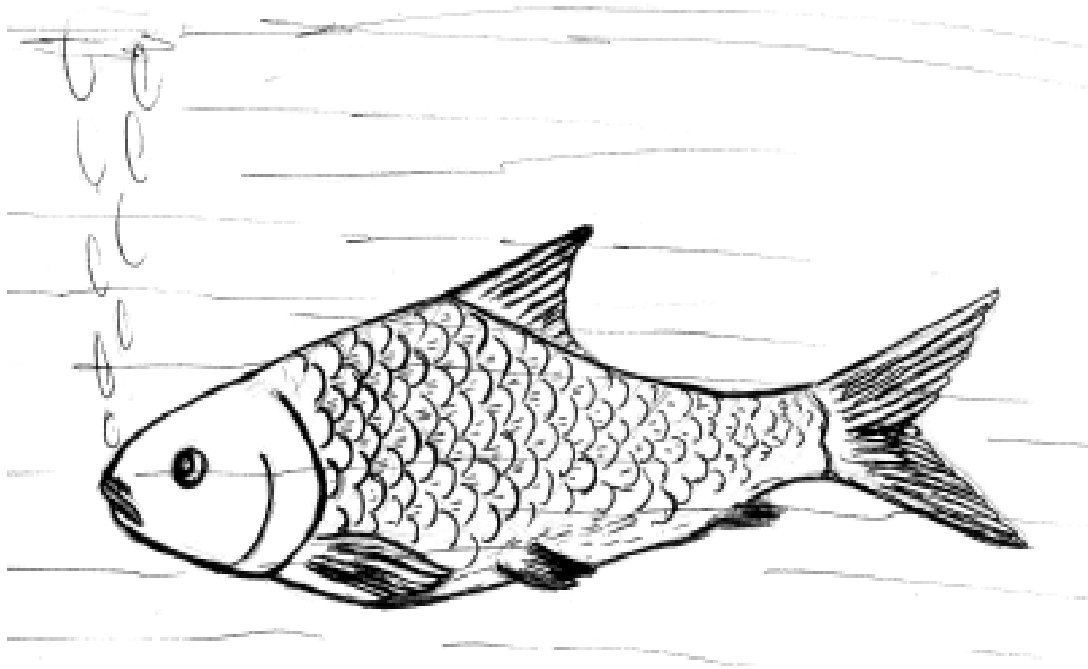


KA' NA' SUM' DUING NYU A JONG





Kue' a ti seunyi lai' na' nyu a ka' na' yawo.
Hawc' ko' lai' na' mae' ka' na' lai na' a
suk'seung' a lah' naee pi ka' pang'
maeng' ko' nyu ui' jong ti meul' a ngam
nyawk' nyaek' a lah' a yeuh keu tit' yawo.
Yam awn' a nang phum' ka ka' na' a
haeeduing sum' nyu jong tit' a yawo.



Ka' na' ko' a yawt' ri yeuh ri rot ti
kleum' hk'u' na' yawo. Daecti a yawt'
ri rot ri lah'ka kleum' hk'u' na' ko' a ri
klawm' poc' hk'uic' yawo.



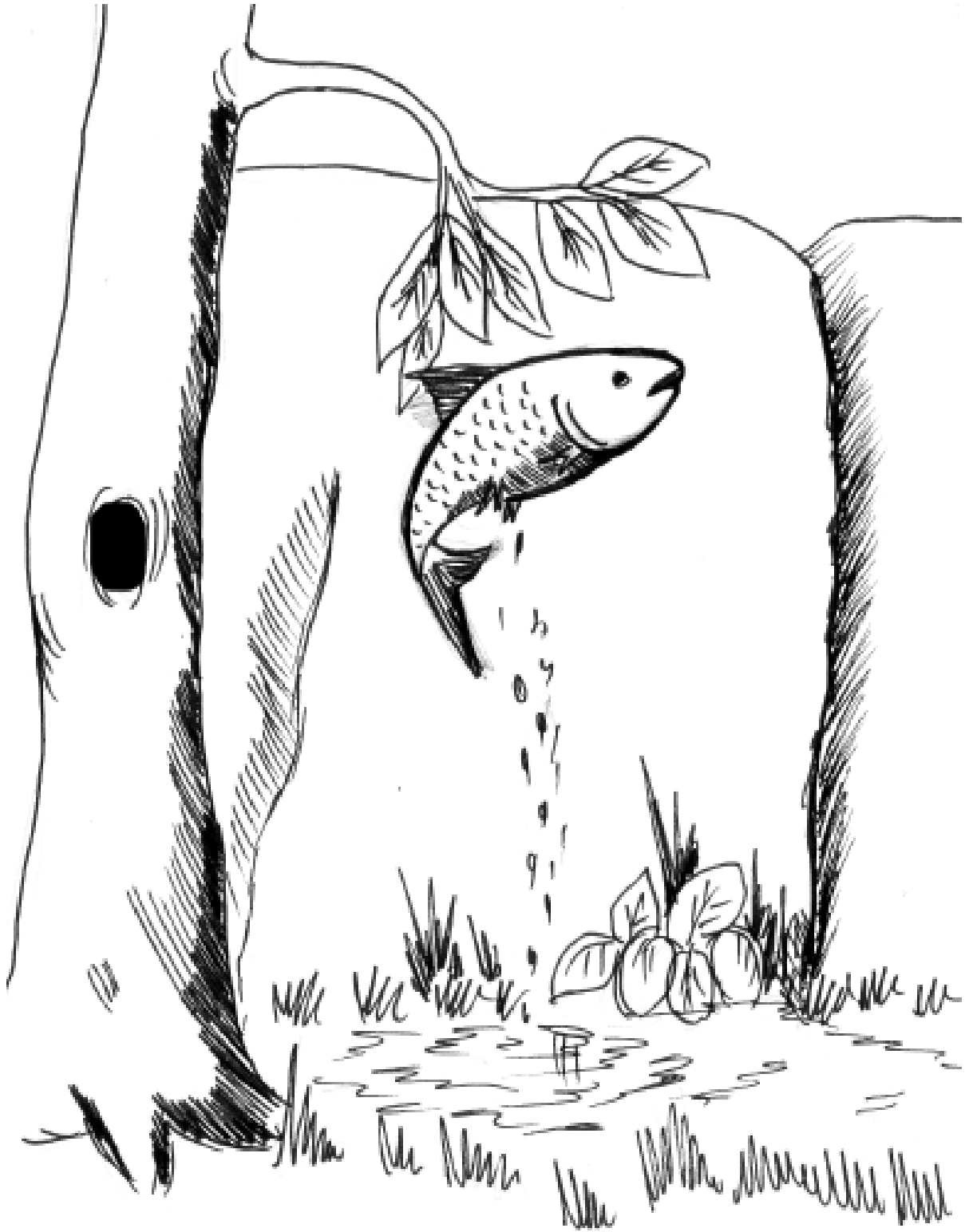
Hawc' awn' na sim' paing titu' a pleul' ing'
cot' ti kak' ka kleum' hk'u' na' yawo.
Hawc' ko' a tang lah' a ri ka' na' oh...naee
pi ka' ui' ri nyu ui' jong hk'o' leumeus'
nyawk' nyaek na' pang maeng' hui... a
tang lah' a pae klaee' ri hk'o' cuing
mhawng' ri lah' a pae yawo. Ka' na' ko'
a gawm sum' nyu jong na' hk'a' naee
phum' ka' na' a pli' pleung' ri yawo.



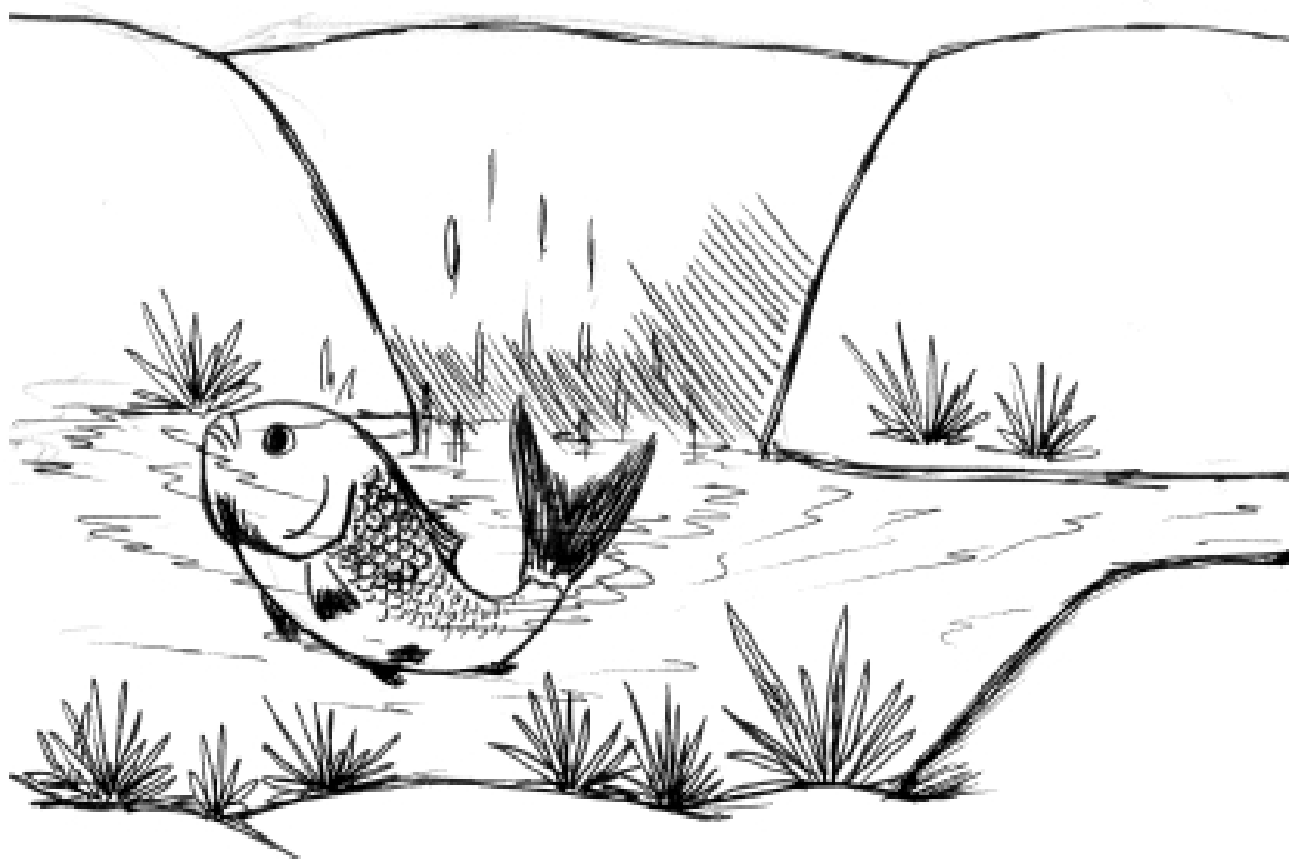
Kop awn' na ka' na' a gawm yawt' ri rot ri
kleum' hk'u' na' yawo. Daecti a rot ti lah'
ka' kleum' hk'u' na' ko' a gawm' poc'
hk'uic' yawo.



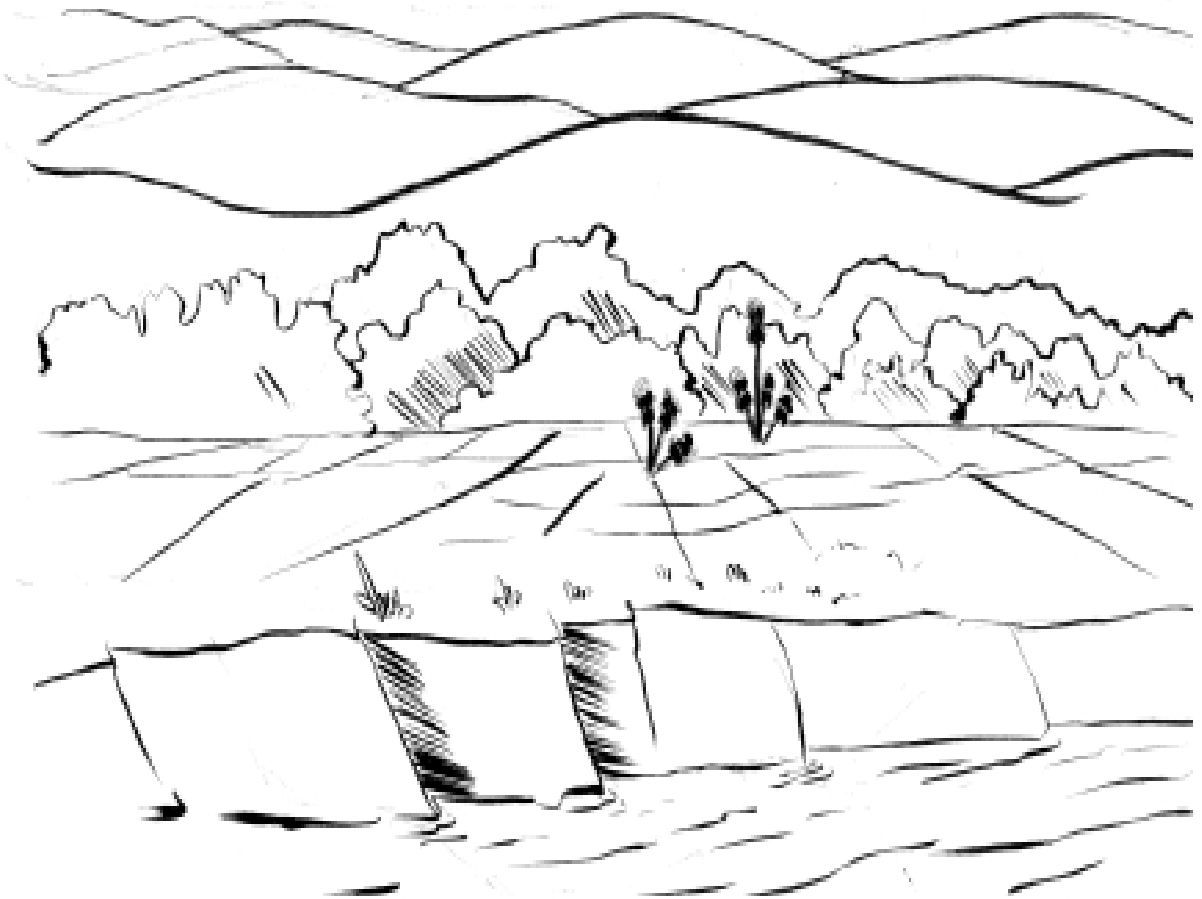
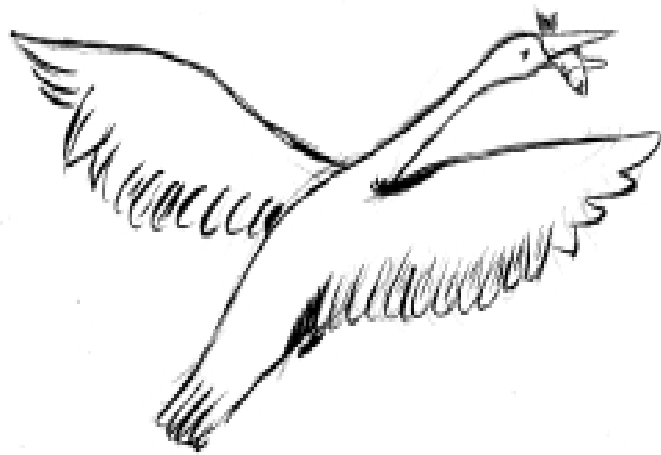
Hawc' ko' ka' na' a tang nyu seueung'
na' leung a ri yuk' kleum' hk'u' na' yawo.
Seueug' na' a nom' pang tem' na' a tang
lah' pang' maeng' ko' nyu ui' jong' ti jong
a tang mhawng' ri lah' a ri ka' na' yawo.



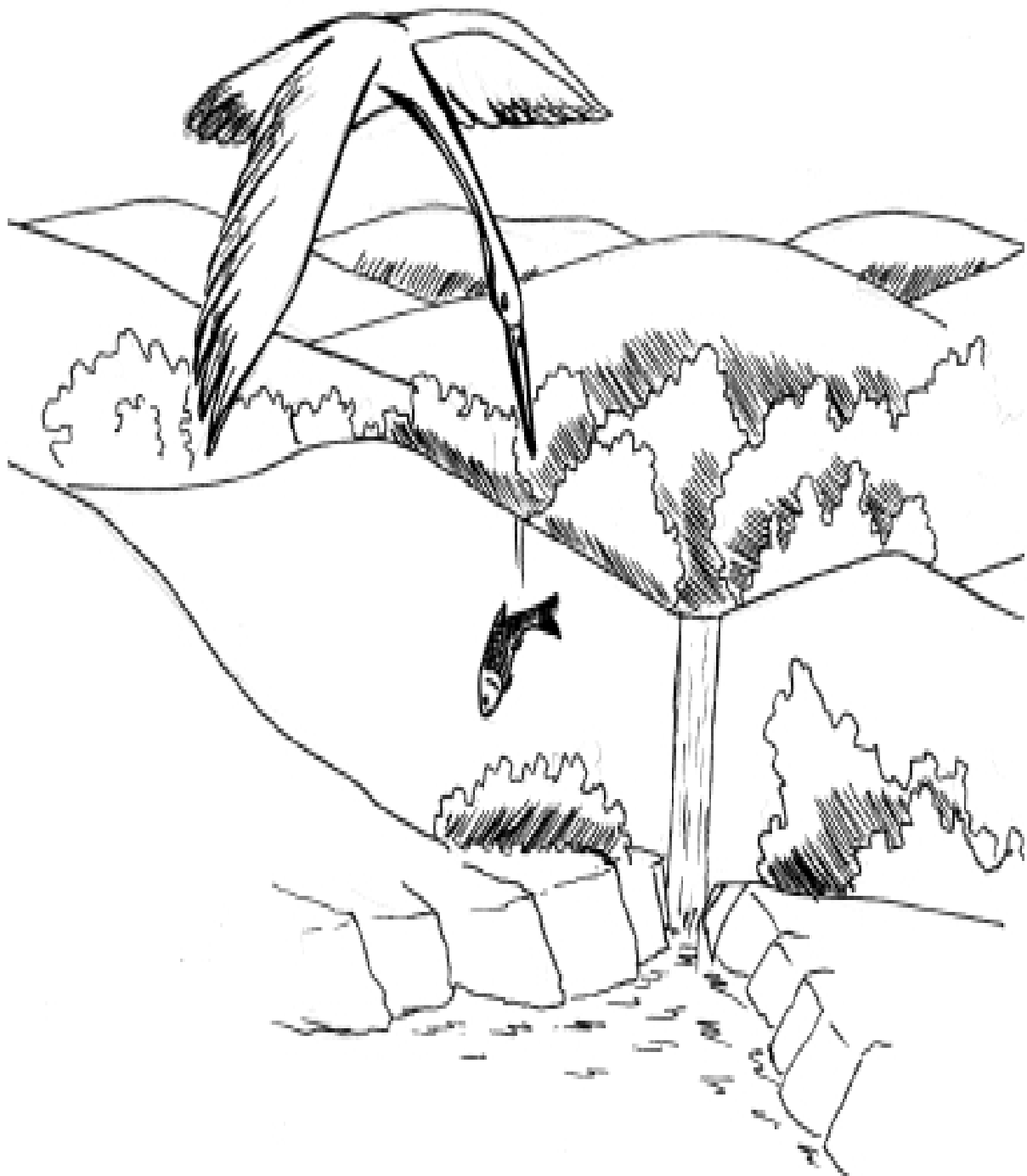
Seung' awng' na ka' na' ata co' ca' ri
yawt' ri yuk' kleum' hk'u' na' pae yawo.
Kop awn' na a rot ti lah' ka kleum' hk'u'
na' ko' a gawm poc' hkuic' pae yawo.



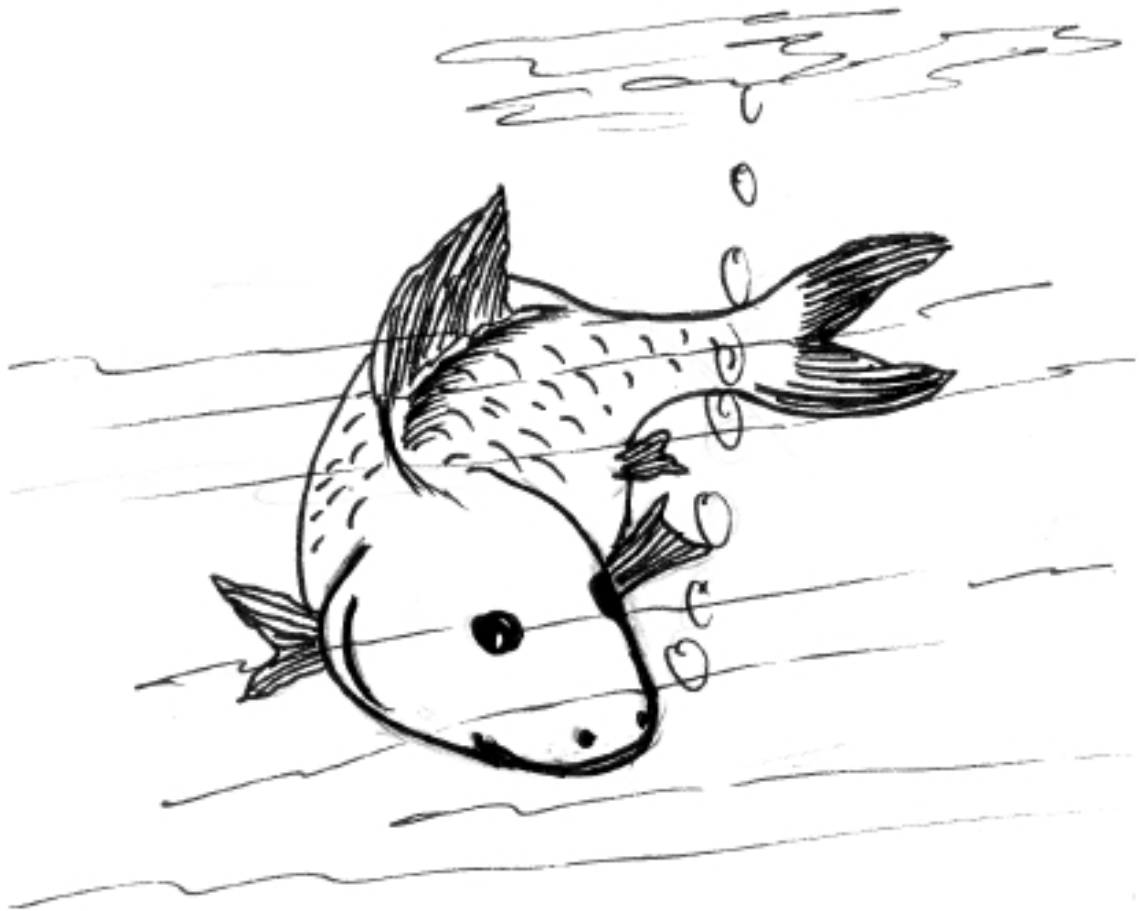
Ka' na' ko' a tal a un' laee kue' vang
keuti' phum' y awo. Ui' ri ko' phawh ui'
ca' kaw tuing' nyu jong tit' a a kuit a
meun a lah' yeuh keutit' yawo.



A hk'uing' ling' a kue' sim' nokyang titu' a pleul' ing' yawo. Nokyang na' a nyu ka' na' yawo. Daecti a theum' ka' na' meuh nang yeum ka yawo. Kop awn' na nokyang na' a tok' ka' na' nang klu na' a kaw' a a pleul' huk' pang lhung' na' yawo. Ka' na' a nyu jong na' jong na' a saee' ngam nyawk' nyaek' a lah' a yeuh keutit' yawo.



Nokyang na' a mhawng' seng' leukah' ka
ka' a plil ut' a nang moeng' ri na' a kaw
co' ca' ri top' leukah' ka na' yawo. Na'
hawc' ko' ka' na' a ta poc' hk'uic' nang
leuum' na' yawo.



Hawc' awn' na ka' na' a ta pun ri im' a ku
pun ri nyu jong na' yawo. Ka' na' ko' rot a
pang maeeng' a pun ri ren'kawn pun
hk'a' a' yu im' ut' rot ti seunyaeng' yawo.

